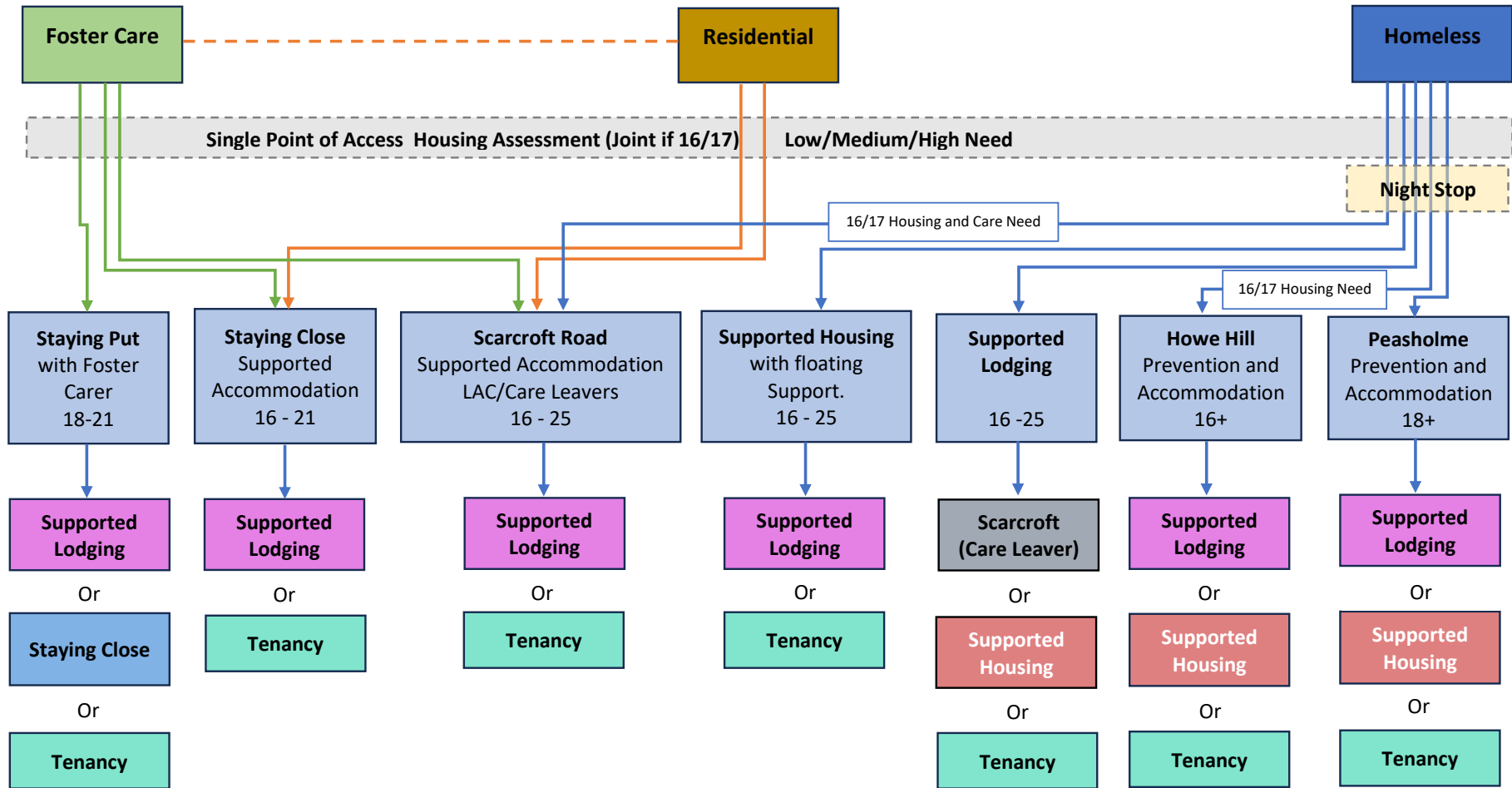


Proposed Best Practice 16 to 25 Accommodation Pathway



Families First Principle - To Support Appropriate Growth to Independence and Reduce Risks of Dependence
 Long Term outcomes for young people are likely to have greater success through sustained relationships with their family members and important parts of their network. These relationships create a level of resilience that can not be replicated by services. The pathway will therefore maintain a relentless culture of prevention and restoration. **A return to Family Members should always be considered as a priority** upon initial presentation and every subsequent transition within it. All Services should have a proactive approach to restoring fractured relationships.

Long Term Outcomes Resilience Scale

